

ROCKY FORGE SITE PLAN

APRIL 18, 2016

BOTETOURT COUNTY, VIRGINIA

NOTES:

1. DEVELOPMENT AREAS SHOWN HEREON ARE PORTIONS OF BOTETOURT COUNTY TAX MAP PARCELS 13-2 AND 20-3, BOTH IN THE NAME OF FRALEY FAMILY RESTATED IRREVOCABLE D'INASTY TRUST AGREEMENT PER INSTRUMENT NUMBERS 03089588 & 03059907, RESPECTIVELY, RECORDED AMONG THE LAND RECORDS OF BOTETOURT COUNTY, VIRGINIA. AREAS ARE SUBJECT TO LEASE AGREEMENTS CONTROLLED BY APEX CLEAN ENERGY, INC.

2. PARCEL ACREAGE :

- TMP 13-2 = 5,692.24 AC (±)
- TMP 20-3 = 1,663.00 AC (±)

3. PARCELS 13-2 AND 20-3 ARE NOW OR FORMERLY ZONED 'FC' FOREST CONSERVATION PER BOTETOURT COUNTY GIS DATA.

4. BOUNDARY SHOWN HEREON IS BASED ON A CURRENT FIELD SURVEY PERFORMED BY TIMMONS GROUP. BOUNDARY PLAT ENTITLED 'BOUNDARY SURVEY OF 2 PARCELS OF LAND TOTALING 7,355 ± ACRES AND LYING NORTH OF ROUTE 622 AND ROUTE 612 IN BOTETOURT COUNTY, VIRGINIA' SHALL BE PROVIDED SEPARATE FROM THIS PLAN.

5. BASIS OF HORIZONTAL DATUM IS NAD 83 (NA 2011), SPCS VA SOUTH.

6. ALL TURBINES SHOWN ARE WITHIN REQUIRED SET-BACKS; PROPOSED TURBINE HEIGHTS = 546'. SUBSEQUENT SET-BACK = 600.6'.

7. GENERALLY, TREES LOCATED WITHIN THE SITE AREA(S) CONSIST PREDOMINANTLY OF CHESTNUT OAKS WITH AN AVERAGE HEIGHT OF 45'.

8. NO NON-PARTICIPATING HOUSES LOCATED WITHIN 6,100' OF PROPOSED TURBINES.

9. EXCAVATION AND FILL AREAS ARE IMPLIED BY 'LIMITS OF CLEARING & GRADING' DELINEATIONS DEPICTED ON PLAN SHEETS.

10. GROUND EQUIPMENT, ELECTRICAL STORAGE & CABLING, COLLECTION & SUPPLY EQUIPMENT, TRANSFORMERS, ANCILLARY EQUIPMENT, AND OTHER PROPOSED ELECTRICAL STRUCTURES WILL BE LOCATED WITHIN THE PROPOSED LIMITS OF CONSTRUCTION SHOWN HEREON.

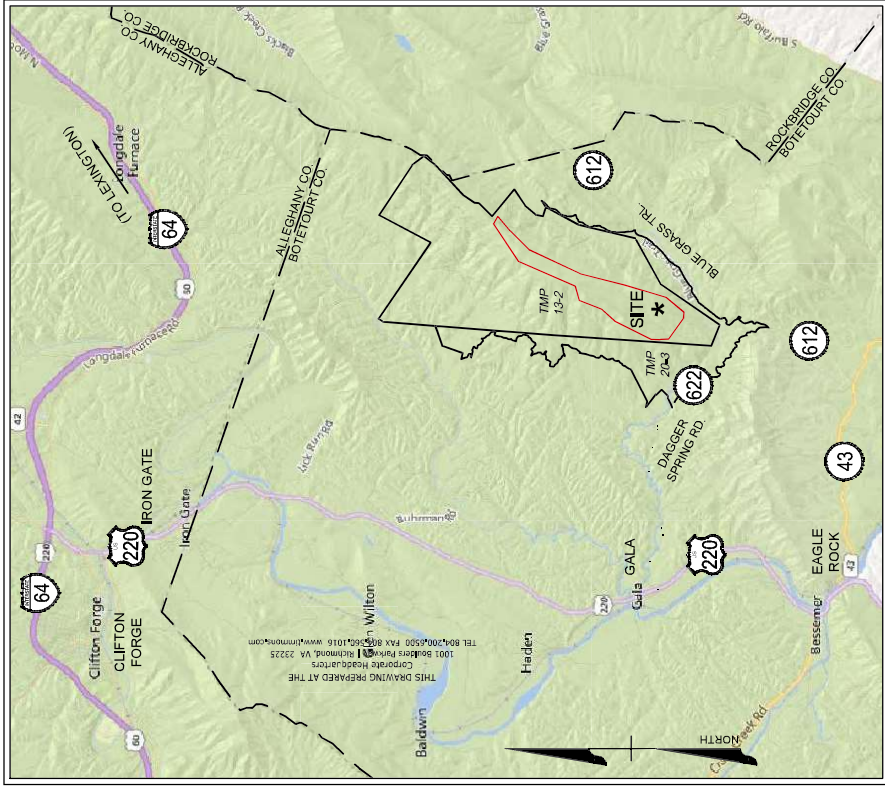
11. NO WATER OR SEWER PROPOSED.

12. OPERATIONS AND MAINTENANCE (O&M) SITES SHALL REQUIRE APPROXIMATELY 5 ACRES OF AREA AND ACCOMMODATE A BUILDING STRUCTURE (TYPICALLY UP TO) 100' x 65' WITH OFFICE AND GARAGE SPACES. PARKING AREA(S) WILL BE INCLUDED WITHIN THE 5 ACRE SITE.

13. A BATCH PLANT SITE OF APPROXIMATELY 3-5 ACRES SHALL BE PART OF THIS PLAN AND INCLUDED WITHIN THE OUTLINED LAY-DOWN AREA PROVISION, TOTALING UP TO 15 ACRES IN SIZE.

14. A ROCK CRUSHER (WITH A FOOTPRINT OF UP TO 20' x 50') AND ANCILLARY EQUIPMENT WILL BE PLACED ON THE PROJECT SITE DURING CONSTRUCTION FOR USE OF ON-SITE RESOURCES RELEVANT TO ACCESS ROAD CONSTRUCTION.

15. SUBSTATION ACCESS ROAD WILL CONTINUE THROUGH O&M SHOULD O&M OPTION 2 NOT BE CLEARED



VICINITY MAP

SCALE: 1" = 2 Miles

28 TOTAL SHEETS

* EACH VIEW SHEET (2.01-2.10) FOLLOWED BY SUPPLEMENTAL VIEW (B) WITH AERIAL IMAGERY OVERLAY (NO CONTOURS)

SHEET NO.	SHEET TITLE
C0.0	COVER
C1.00	SITE BOUNDARY & SETBACK EXHIBIT
C1.01	TURBINE SECTION
C2.00	SITE LAYOUT PLAN KEY / OVERVIEW
C2.01*	SITE LAYOUT (VIEW)
C2.02*	SITE LAYOUT (VIEW)
C2.03*	SITE LAYOUT (VIEW)
C2.04*	SITE LAYOUT (VIEW)
C2.05*	SITE LAYOUT (VIEW)
C2.06*	SITE LAYOUT (VIEW)
C2.07*	SITE LAYOUT (VIEW)
C2.08*	SITE LAYOUT (VIEW)
C2.09*	SITE LAYOUT (VIEW)
C2.10*	SITE LAYOUT (VIEW)
C4.20	PROFILES
C4.21	PROFILES
C4.22	PROFILES
C4.23	PROFILES
C4.24	PROFILES

**APPLICANT AND DEVELOPER:
ROCKY FORGE WIND, LLC**



TIMMONS GROUP

THIS DRAWING PREPARED AT THE CORPORATE OFFICE, 1001 BOLDERS PARKWAY, SUITE 300, RICHMOND, VA 23225

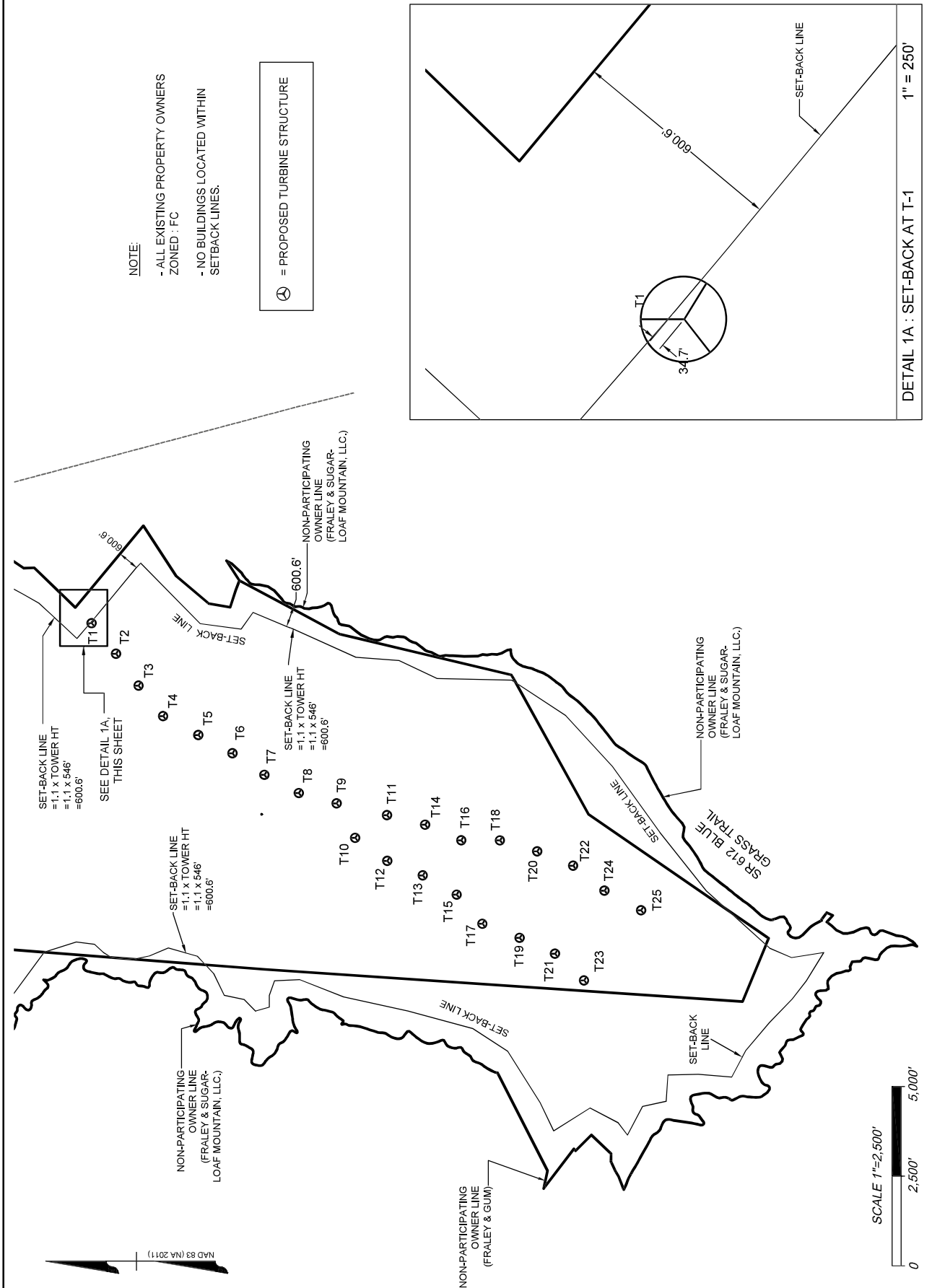
YOUR VISION ACHIEVED THROUGH OURS.

DATE: 4/15/2016	DESIGNED BY: R. WINKLER	SCALE: AS SHOWN	PROJECT NO.: 35859	SHEET NO.: C0.00
REVISION DESCRIPTION:	DRAWN BY:	DATE:	COVER SHEET	
	DESIGNED BY: R. WINKLER		ROCKY FORGE	
	CHECKED BY: D. JAMESON		FINCASLE DISTRICT • BOTETOURT COUNTY • VIRGINIA	

DATE	3/9/2016
DRAWN BY	R. WINKLER
DESIGNED BY	R. WINKLER
CHECKED BY	D. JANSOBY
SCALE	AS SHOWN
SITE BOUNDARY & SET-BACK EXHIBIT	
FINCASTE DISTRICT - BOTETOURT COUNTY - VIRGINIA	
ROCKY FORGE	
DRAWING NO.	35859
SHEET NO.	C1.00

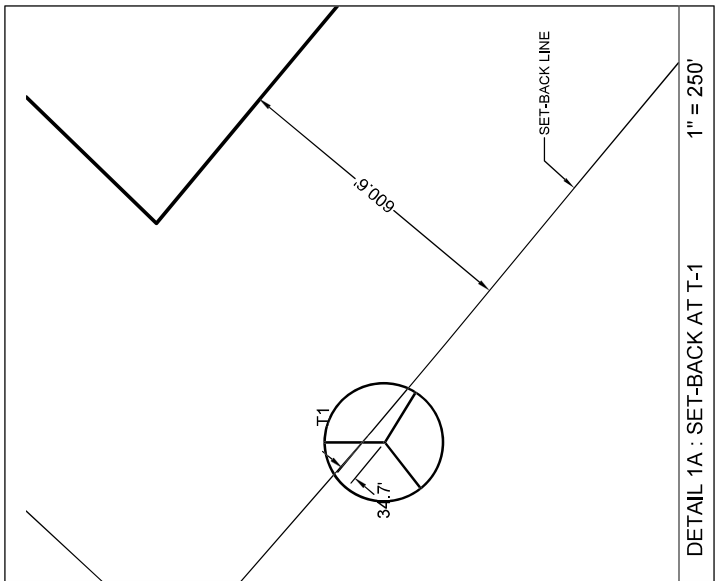
THIS DRAWING PREPARED AT THE
 CREATIVE ENGINEERING CENTER
 1001 BOLDERS PARKWAY, SUITE 300
 RICHMOND, VA 23225

YOUR VISION ACHIEVED THROUGH OURS.



NOTE:
 - ALL EXISTING PROPERTY OWNERS
 ZONED : FC
 - NO BUILDINGS LOCATED WITHIN
 SETBACK LINES.

⊙ = PROPOSED TURBINE STRUCTURE




DETAIL 1A : SET-BACK AT T-1
 1" = 250'



These files and associated documents are the exclusive property of TIMMONS GROUP and may not be reproduced, modified or copied in whole or in part for any purpose without the express written consent of TIMMONS GROUP.

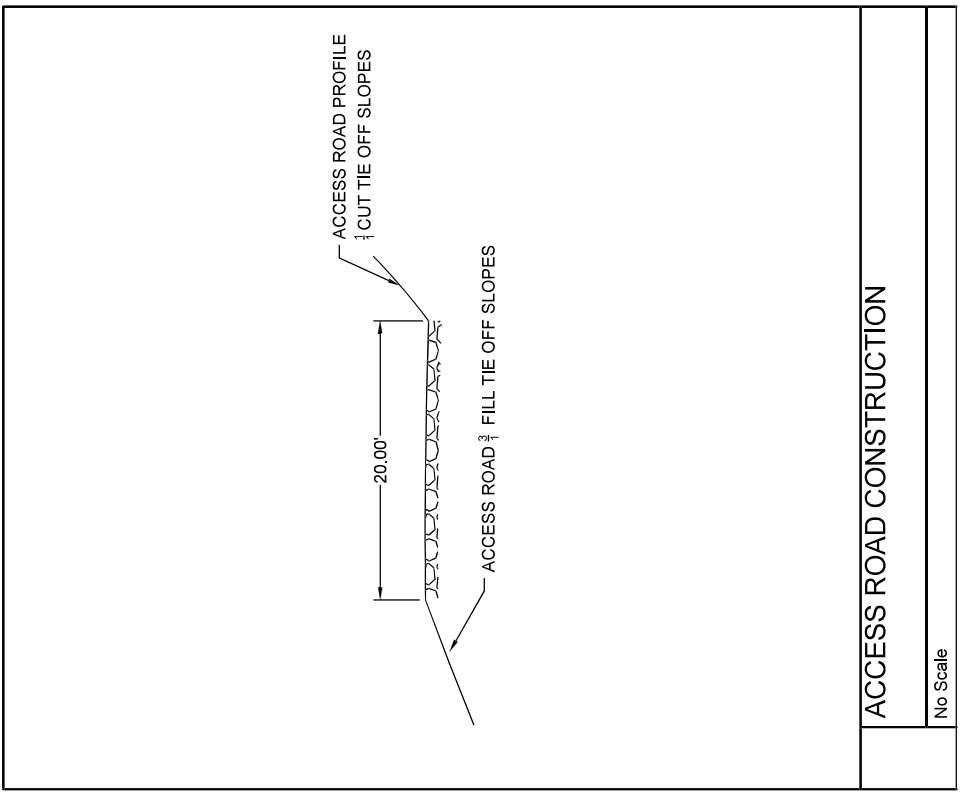
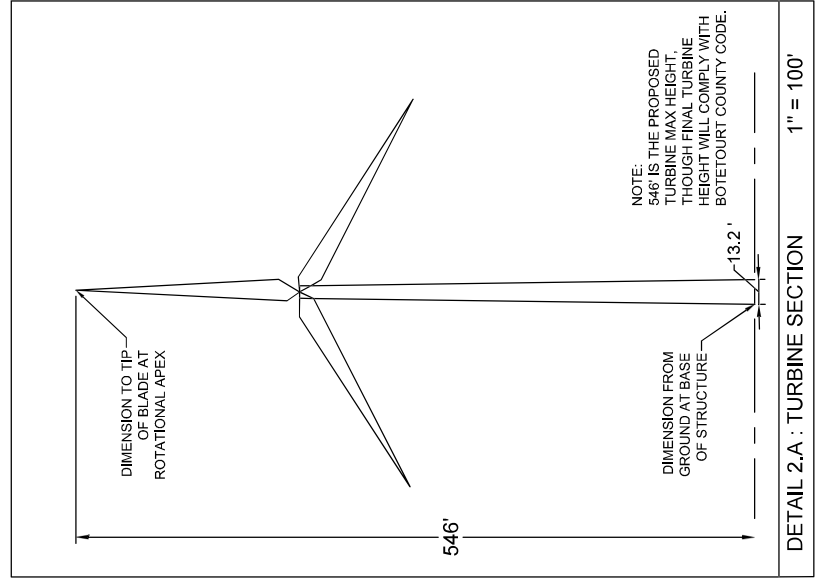
PROJECT NO.	358559
SHEET NO.	CL101
ROCKY FORGE FINCASTE DISTRICT • BOTETOURT COUNTY • VIRGINIA TURBINE SECTION	
DATE	3/9/2016
DESIGNED BY	R. WINKLER
CHECKED BY	R. WINKLER
SCALE	AS SHOWN

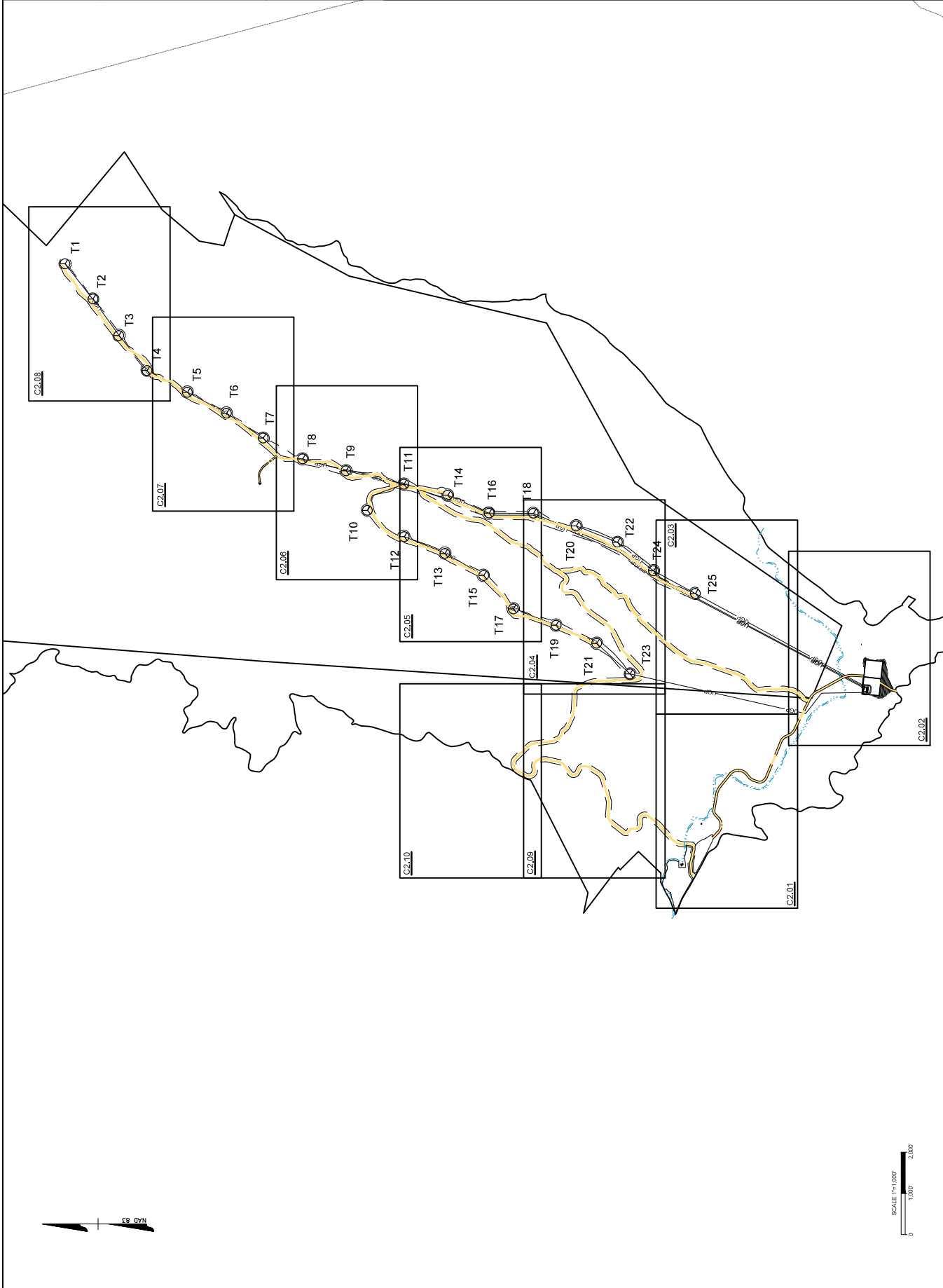
THIS DRAWING PREPARED AT THE
CORPORATE OFFICE
1001 BOULDERBEND PARKWAY, SUITE 300
RICHMOND, VA 23225



TIMMONS GROUP

YOUR VISION ACHIEVED THROUGH OURS.

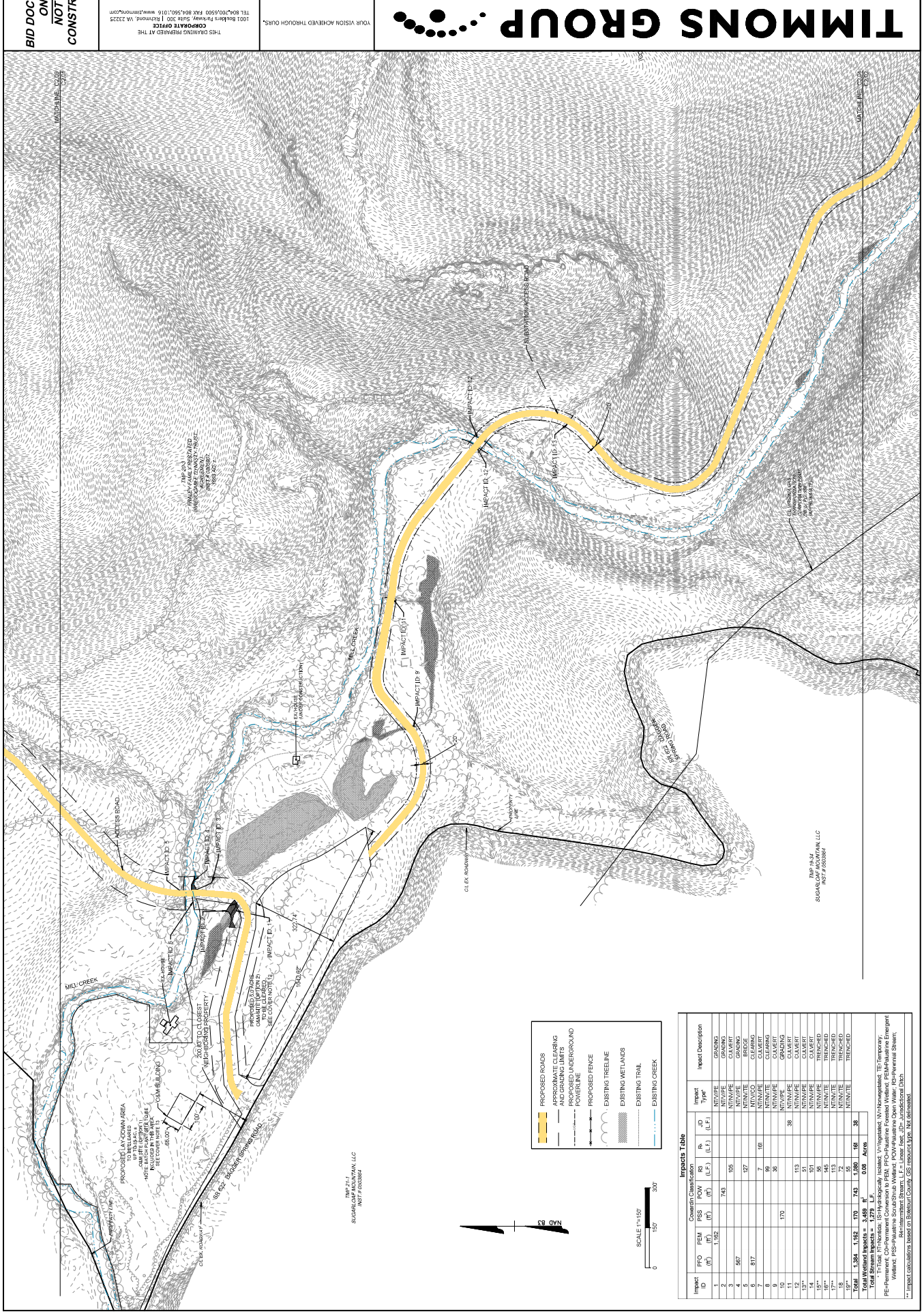




**BID DOCUMENTS
ONLY
NOT FOR
CONSTRUCTION**

SCALE 1"=100'
0 100' 200'

NAD 83



Impacts Table

Impact ID	FTO (FT)	REL (FT)	PSS (FT)	POW (FT)	R#	JD (L.F.)	Impact Type	Impact Description
1	1,182			743	100	113	NT/NM/PE	GRADING
2					100	113	NT/NM/PE	GRADING
3					100	113	NT/NM/PE	GRADING
4	587			127	100	113	NT/NM/PE	GRADING
5					100	113	NT/NM/PE	GRADING
6	817				100	113	NT/NM/PE	GRADING
7					100	113	NT/NM/PE	GRADING
8					100	113	NT/NM/PE	GRADING
9					100	113	NT/NM/PE	GRADING
10					100	113	NT/NM/PE	GRADING
11					100	113	NT/NM/PE	GRADING
12					100	113	NT/NM/PE	GRADING
13					100	113	NT/NM/PE	GRADING
14					100	113	NT/NM/PE	GRADING
15					100	113	NT/NM/PE	GRADING
16					100	113	NT/NM/PE	GRADING
17					100	113	NT/NM/PE	GRADING
18					100	113	NT/NM/PE	GRADING
19					100	113	NT/NM/PE	GRADING
20					100	113	NT/NM/PE	GRADING
21					100	113	NT/NM/PE	GRADING
22					100	113	NT/NM/PE	GRADING
23					100	113	NT/NM/PE	GRADING
24					100	113	NT/NM/PE	GRADING
25					100	113	NT/NM/PE	GRADING
26					100	113	NT/NM/PE	GRADING
27					100	113	NT/NM/PE	GRADING
28					100	113	NT/NM/PE	GRADING
29					100	113	NT/NM/PE	GRADING
30					100	113	NT/NM/PE	GRADING
31					100	113	NT/NM/PE	GRADING
32					100	113	NT/NM/PE	GRADING
33					100	113	NT/NM/PE	GRADING
34					100	113	NT/NM/PE	GRADING
35					100	113	NT/NM/PE	GRADING
36					100	113	NT/NM/PE	GRADING
37					100	113	NT/NM/PE	GRADING
38					100	113	NT/NM/PE	GRADING
39					100	113	NT/NM/PE	GRADING
40					100	113	NT/NM/PE	GRADING
41					100	113	NT/NM/PE	GRADING
42					100	113	NT/NM/PE	GRADING
43					100	113	NT/NM/PE	GRADING
44					100	113	NT/NM/PE	GRADING
45					100	113	NT/NM/PE	GRADING
46					100	113	NT/NM/PE	GRADING
47					100	113	NT/NM/PE	GRADING
48					100	113	NT/NM/PE	GRADING
49					100	113	NT/NM/PE	GRADING
50					100	113	NT/NM/PE	GRADING
51					100	113	NT/NM/PE	GRADING
52					100	113	NT/NM/PE	GRADING
53					100	113	NT/NM/PE	GRADING
54					100	113	NT/NM/PE	GRADING
55					100	113	NT/NM/PE	GRADING
56					100	113	NT/NM/PE	GRADING
57					100	113	NT/NM/PE	GRADING
58					100	113	NT/NM/PE	GRADING
59					100	113	NT/NM/PE	GRADING
60					100	113	NT/NM/PE	GRADING
61					100	113	NT/NM/PE	GRADING
62					100	113	NT/NM/PE	GRADING
63					100	113	NT/NM/PE	GRADING
64					100	113	NT/NM/PE	GRADING
65					100	113	NT/NM/PE	GRADING
66					100	113	NT/NM/PE	GRADING
67					100	113	NT/NM/PE	GRADING
68					100	113	NT/NM/PE	GRADING
69					100	113	NT/NM/PE	GRADING
70					100	113	NT/NM/PE	GRADING
71					100	113	NT/NM/PE	GRADING
72					100	113	NT/NM/PE	GRADING
73					100	113	NT/NM/PE	GRADING
74					100	113	NT/NM/PE	GRADING
75					100	113	NT/NM/PE	GRADING
76					100	113	NT/NM/PE	GRADING
77					100	113	NT/NM/PE	GRADING
78					100	113	NT/NM/PE	GRADING
79					100	113	NT/NM/PE	GRADING
80					100	113	NT/NM/PE	GRADING
81					100	113	NT/NM/PE	GRADING
82					100	113	NT/NM/PE	GRADING
83					100	113	NT/NM/PE	GRADING
84					100	113	NT/NM/PE	GRADING
85					100	113	NT/NM/PE	GRADING
86					100	113	NT/NM/PE	GRADING
87					100	113	NT/NM/PE	GRADING
88					100	113	NT/NM/PE	GRADING
89					100	113	NT/NM/PE	GRADING
90					100	113	NT/NM/PE	GRADING
91					100	113	NT/NM/PE	GRADING
92					100	113	NT/NM/PE	GRADING
93					100	113	NT/NM/PE	GRADING
94					100	113	NT/NM/PE	GRADING
95					100	113	NT/NM/PE	GRADING
96					100	113	NT/NM/PE	GRADING
97					100	113	NT/NM/PE	GRADING
98					100	113	NT/NM/PE	GRADING
99					100	113	NT/NM/PE	GRADING
100					100	113	NT/NM/PE	GRADING

Total Stream Impacts = 1,498 L.F.
Total Wetland Impacts = 1,498 L.F.
Total Wetland Acres = 0.08

Legend:
 - PROPOSED ROADS
 - APPROXIMATE CLEARING AND GRADING LIMITS
 - POWERLINE
 - PROPOSED FENCE
 - EXISTING TIRELINE
 - EXISTING WETLANDS
 - EXISTING TRAIL
 - EXISTING CREEK

Scale: 1"=150'
 0 150 300

North Arrow: N

Timmons Group and associated documents are the sole property of TIMMONS GROUP and may not be reproduced in whole or in part and shall not be used for any purpose not intended by TIMMONS GROUP. Timmons Group reserves the right to modify these documents without notice. The user agrees to indemnify and hold the user harmless from and against all claims, damages, and expenses, including reasonable attorneys' fees, arising out of or from the use of these documents.



- PROPOSED ROADS
- WETLANDS LIMITS AND GRADING LIMITS
- PROPOSED UNDERGROUND POWER LINE
- PROPOSED FENCE
- EXISTING TIRELINE
- EXISTING WETLANDS
- EXISTING TRAIL
- EXISTING CREEK



TIMMONS GROUP



SHEET NO. C2.01B	
JOB NO.	
FINCASTLE DISTRICT - BOTETOURT COUNTY - VIRGINIA	
ROCKY FORGE	
SITE LAYOUT	
DESIGNED BY	R. Winkler
CHECKED BY	R. Winkler
SCALE	AS SHOWN
DATE	
REVISION DESCRIPTION	DATE

YOUR VISION ACHIEVED THROUGH OURS.
 1001 Bakers Ferry Way, Suite 300, Timmons, VA 22251
 TEL 804.706.6500 FAX 804.540.1916 WWW.TIMMONS.COM
 THIS DRAWING PREPARED AT THE CORPORATE OFFICE

BID DOCUMENTS ONLY
NOT FOR CONSTRUCTION

Timmons Group and associated documents are the sole property of TIMMONS GROUP and may be reproduced in whole or in part and shall not be used for any purpose without the express written consent of TIMMONS GROUP.