

FWIS Database Analysis

Because the Project Area is a relatively large, linear feature, it was necessary to query the FWIS data base using four points, one located at each “corner” of the Project Area (NE, NW, SE, SW), to ensure that the entire Project Area plus two miles was evaluated.

The following maps and lists of species are identified by coordinate but are also labeled as Northeast, Northwest, Southwest, and Southeast to identify the applicable Project Area corner.

Define Point of Interest
Eagle Rock (Populated
Place) Botetourt

37,43,33.9 -79,41,49.2
is the Search Point
Submit Cancel

Search Point
 Change to "clicked" map
point
 Fixed at 37,43,33.9
-79,41,49.2

Show Position Rings
 Yes No
4 miles and 1 mile at the
Search Point

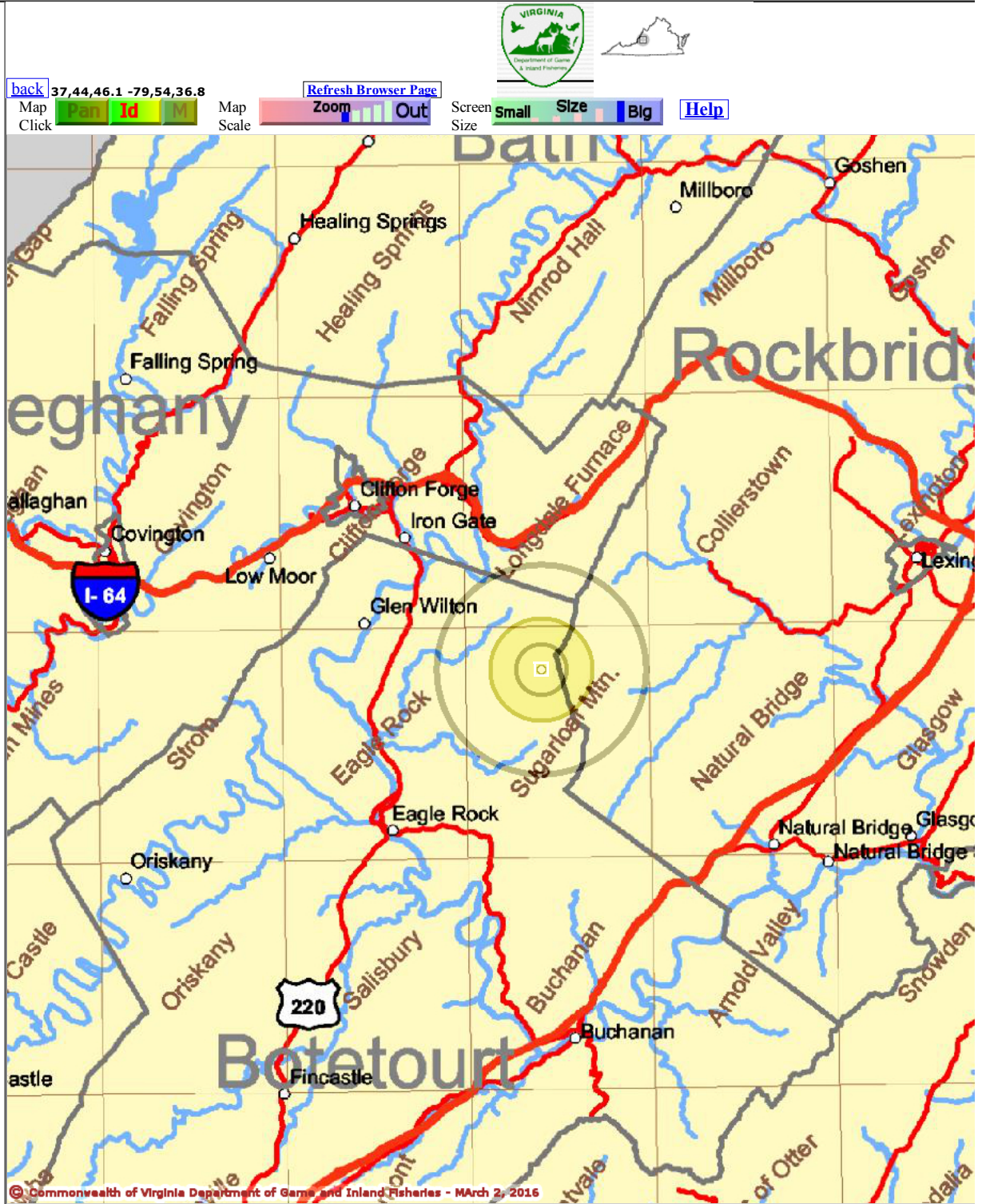
Show Search Area
 Yes No
2 Search distance miles
radius

Search Point is at
map center

Base Map Choices
County - Quadrangle

Map Overlay Choices
Current List: Search, Position

- Map Overlay Legend
- Position Rings
4 miles and 1
mile at the
Search Point
 - 2 mile radius
Search Area



Point of Search 37,43,33.9 -79,41,49.2
 Map Location 37,43,33.9 -79,41,49.2

Select Coordinate System: Degrees, Minutes, Seconds Latitude - Longitude
 Decimal Degrees Latitude - Longitude
 Meters UTM NAD83 East North Zone
 Meters UTM NAD27 East North Zone

Base Map source: 2003 Va. DGIF Virginia Basemap

Map projection is UTM Zone 17 NAD 1983 with left 582825 and top 4208225. Pixel size is 64 meters . Coordinates displayed are Degrees, Minutes, Seconds North and West. Map is currently displayed as 1000 columns by 1000 rows for a total of 1000000 pixels. The map display represents 64000 meters east to west by 64000 meters north to south for a total of 4096.0 square kilometers. The map display represents 210009 feet east to west by 210009 feet north to south for a total of 1582.0 square miles.

Topographic maps and Black and white aerial photography for year 1990+- are from the United States Department of the Interior, United States Geological Survey. Color aerial photography aquired 2002 is from Virginia Base Mapping Program, Virginia Geographic Information Network.

Shaded topographic maps are from TOPO! ©2006 National Geographic
<http://www.national.geographic.com/topo>

All other map products are from the Commonwealth of Virginia Department of Game and Inland Fisheries.

map assembled 2016-03-02 15:24:39 (qa/qc December 5, 2012 8:04 - tn=712939.0
dist=3218.688 I)
\$poi=37.6406864 -79.8011563

| [DGIF](#) | [Credits](#) | [Disclaimer](#) | Contact shirl.dressler@dgif.virginia.gov | Please view our [privacy policy](#) |
© 1998-2016 Commonwealth of Virginia Department of Game and Inland Fisheries



Virginia Department of Game and Inland Fisheries

3/2/2016 3:32:52 PM

Fish and Wildlife Information Service

VaFWIS Initial Project Assessment Report Compiled on
3/2/2016, 3:32:52 PM

[Help](#)

Known or likely to occur within a **2 mile radius around point Eagle Rock Populated Place Botetourt**
(at 37.7260833 -79.6970000)
in **023 Botetourt County, 163 Rockbridge County, VA**

[View Map of Site Location](#)

541 Known or Likely Species ordered by Status Concern for Conservation
(displaying first 31) (31 species with Status* or Tier I** or Tier II**)

BOVA Code	Status*	Tier**	Common Name	Scientific Name	Confirmed	Database(s)
060017	FESE	I	Spinymussel, James	Pleurobema collina		BOVA
050022	FT		Bat, northern long-eared	Myotis septentrionalis		BOVA
110239	FSSE	I	Coil, rubble	Helicodiscus lirellus		BOVA
110066	FSSE	I	Coil, shaggy	Helicodiscus diadema		BOVA
040096	ST	I	Falcon, peregrine	Falco peregrinus		BOVA
040129	ST	I	Sandpiper, upland	Bartramia longicauda		BOVA
040293	ST	I	Shrike, loggerhead	Lanius ludovicianus		BOVA
010127	FSST	II	Madtom, orangefin	Noturus gilberti		BOVA
060081	ST	II	Floater, green	Lasmigona subviridis		BOVA
060173	FSST	II	Pigtoe, Atlantic	Fusconaia masoni		BOVA
040292	ST		Shrike, migrant loggerhead	Lanius ludovicianus migrans		BOVA
070109	FS	I	Isopod, Natural Bridge Cave	Caecidotea bowmani		BOVA
100248	FS	I	Fritillary, regal	Speyeria idalia idalia		BOVA
010346	FS	II	Shiner, roughhead	Notropis semperasper		BOVA
020039	FS	II	Salamander, Peaks of Otter	Plethodon hubrichti		BOVA
040093	FS	II	Eagle, bald	Haliaeetus leucocephalus		BOVA
060029	FS	III	Lance, yellow	Elliptio lanceolata		BOVA
100001	FS	IV	fritillary, Diana	Speyeria diana		BOVA
030012	CC	IV	Rattlesnake, timber	Crotalus horridus		BOVA

030040		I	Pinesnake, northern	Pituophis melanoleucus melanoleucus		BOVA
040372		I	Crossbill, red	Loxia curvirostra		BOVA
040225		I	Sapsucker, yellow-bellied	Sphyrapicus varius		BOVA
040319		I	Warbler, black-throated green	Setophaga virens		BOVA
040306		I	Warbler, golden-winged	Vermivora chrysoptera		BOVA
060084		I	Pigtoe, Virginia	Lexingtonia subplana		BOVA
010432		II	Madtom, spotted-margin	Noturus insignis ssp 1		BOVA
040052		II	Duck, American black	Anas rubripes		BOVA
040036		II	Night-heron, yellow-crowned	Nyctanassa violacea violacea		BOVA
040213		II	Owl, northern saw-whet	Aegolius acadicus		BOVA
040320		II	Warbler, cerulean	Setophaga cerulea		BOVA
040266		II	Wren, winter	Troglodytes troglodytes		BOVA

To view **All 541 species** [View 541](#)

* FE=Federal Endangered; FT=Federal Threatened; SE=State Endangered; ST=State Threatened;
FC=Federal Candidate; FS=Federal Species of Concern; CC=Collection Concern

** I=VA Wildlife Action Plan - Tier I - Critical Conservation Need;
II=VA Wildlife Action Plan - Tier II - Very High Conservation Need;
III=VA Wildlife Action Plan - Tier III - High Conservation Need;
IV=VA Wildlife Action Plan - Tier IV - Moderate Conservation Need

Bat Colonies or Hibernacula: **Not Known**

Anadromous Fish Use Streams

N/A

Colonial Water Bird Survey

N/A

Threatened and Endangered Waters

N/A

Managed Trout Streams (6 records) (Click on Stream Name to view complete reach history)

[View Map of All Trout Stream Surveys](#)

Reach ID	Stream Name	Class	Brook Trout	Brown Trout	Rainbow Trout	View Map
10MIV-01T	Mill Creek	Wild trout				Yes
10ROY-01	Rocky Creek	Wild trout	Y			Yes
10ROY-01T	Rocky Creek	Wild trout				Yes
10SKG-01T	Sinking Creek	Wild trout				Yes
10SMT-01	Smith Branch	Wild trout	Y	Y		Yes
10TRC-01	Trout Run	Wild trout	Y			Yes

Bald Eagle Concentration Areas and Roosts

N/A

Bald Eagle Nests

N/A

Habitat Predicted for Aquatic WAP Tier I & II Species

N/A

Habitat Predicted for Terrestrial WAP Tier I & II Species

N/A

Public Holdings: (2 names)

Name	Agency	Level
George Washington National Forest	U.S. Forest Service	Federal
Jefferson Natioanl Forest	U.S. Forest Service	Federal

Compiled on 3/2/2016, 3:32:52 PM 1712939.0 report=IPA searchType= R dist= 3218.688 poi= 37.7260833 -79.6970000

PixelSize=64; Anadromous=0.015678; BECAR=0.012763; Bats=0.013012; Buffer=0.101117; County=0.061086; Impediments=0.013552; Init=0.137371; PublicLands=0.019985; SpObs=0.207914; TEWaters=0.015992; TierReaches=0.016788; TierTerrestrial=0.0330240000000001; Total=0.74665; Tracking_BOVA=0.178764; Trout=0.018647

audit no. 712939 3/2/2016 3:32:52 PM Virginia Fish and Wildlife Information Service
© 1998-2016 Commonwealth of Virginia Department of Game and Inland Fisheries

VaFWIS - Department of Game and Inland Fisheries



37,41,41.3 -79,44,46.5
is the Search Point

[back](#) 37,42,23.5 -79,44,17.0 [Refresh Browser Page](#)

Map Click Map Scale [Help](#)

Search Point

- Change to "clicked" map point
- Fixed at 37,41,41.3 -79,44,46.5

Show Position Rings

- Yes No
- 1 mile and 1/4 mile at the Search Point

Show Search Area

- Yes No
- 2 Search distance miles radius

Search Point is at map center

Base Map [Choices](#)

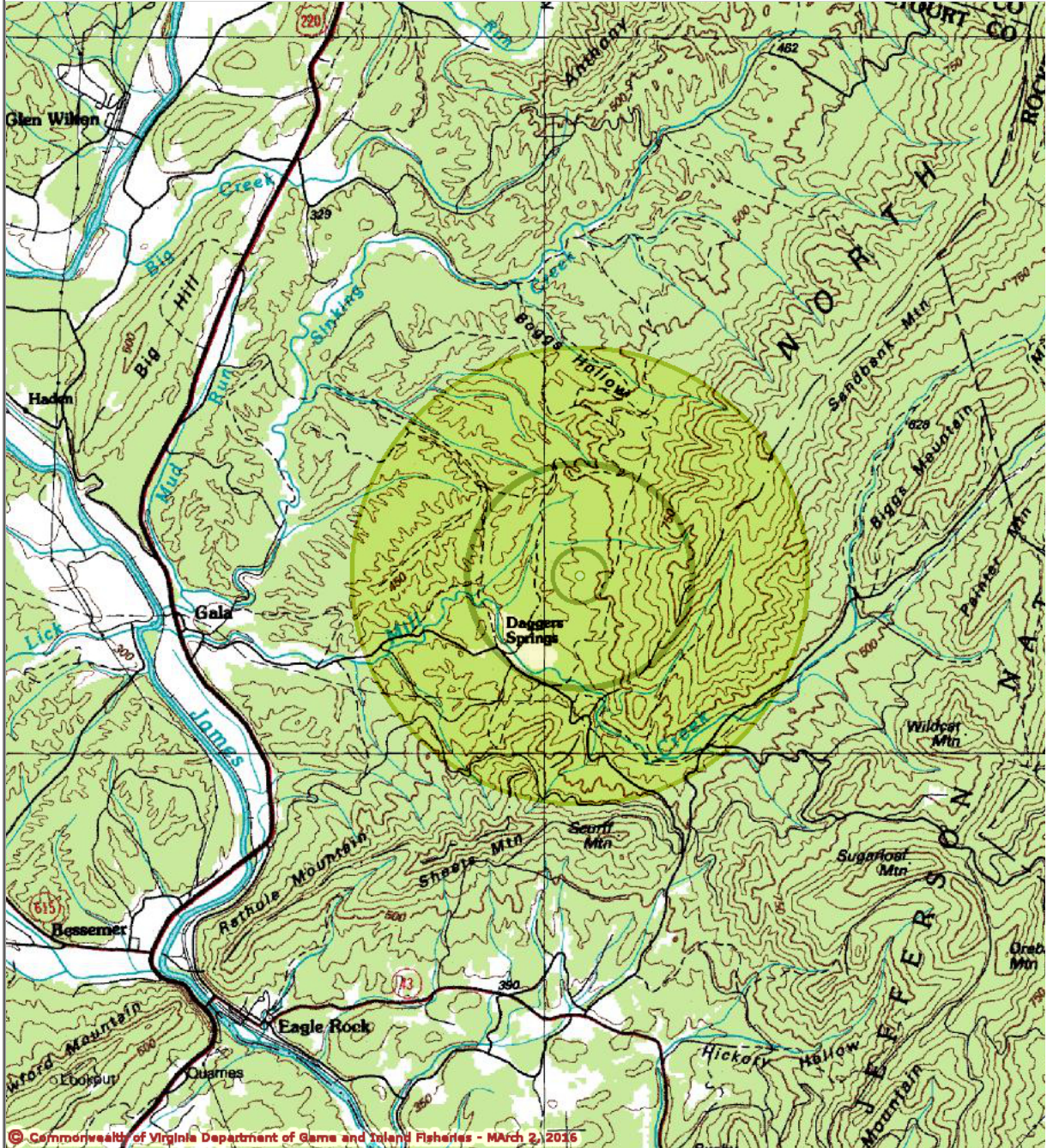
Topography

Map Overlay [Choices](#)

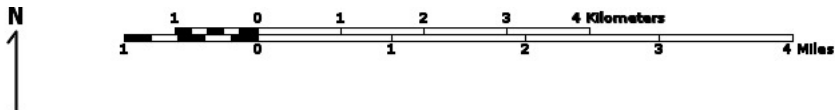
Current List: Position, Search

Map Overlay Legend

- Position Rings 1 mile and 1/4 mile at the Search Point
- 2 mile radius Search Area



© Commonwealth of Virginia Department of Game and Inland Fisheries - March 2, 2016



Point of Search 37,41,41.3 -79,44,46.5

Map Location 37,41,41.3 -79,44,46.5

- Select Coordinate System:
- Degrees, Minutes, Seconds Latitude - Longitude
 - Decimal Degrees Latitude - Longitude
 - Meters UTM NAD83 East North Zone
 - Meters UTM NAD27 East North Zone

Base Map source: USGS 1:100,000 topographic maps (see [Microsoft terraserver-usa.com](http://Microsoft.terraserver-usa.com) for details)

Map projection is UTM Zone 17 NAD 1983 with left 602532 and top 4180694. Pixel size is 16 meters . Coordinates displayed are Degrees, Minutes, Seconds North and West. Map is currently displayed as 1000 columns by 1000 rows for a total of 1000000 pixels. The map display represents 16000 meters east to west by 16000 meters north to south for a total of 256.0 square kilometers. The map display represents 52502 feet east to west by 52502 feet north to south for a total of 98.8 square miles.

Topographic maps and Black and white aerial photography for year 1990+- are from the United States Department of the Interior, United States Geological Survey. Color aerial photography aquired 2002 is from Virginia Base Mapping Program, Virginia Geographic Information Network.

Shaded topographic maps are from TOPO! ©2006 National Geographic
<http://www.national.geographic.com/topo>

All other map products are from the Commonwealth of Virginia Department of Game and Inland Fisheries.

map assembled 2016-03-02 15:40:32 (qa/qc December 5, 2012 8:04 - tn=712956 dist=3218 I)
\$poi=37.6836388 -79.7535277

| [DGIF](#) | [Credits](#) | [Disclaimer](#) | Contact shirl.dressler@dgif.virginia.gov | Please view our [privacy policy](#) |
© 1998-2016 Commonwealth of Virginia Department of Game and Inland Fisheries

VaFWIS Initial Project Assessment Report Compiled on[Help](#)

3/2/2016, 3:42:15 PM

Known or likely to occur within a **2 mile radius around point 37,41,41.3 -79,44,46.5**
in **023 Botetourt County, VA**

[View Map of
Site Location](#)

488 Known or Likely Species ordered by Status Concern for Conservation
(displaying first 26) (26 species with Status* or Tier I** or Tier II**)

BOVA Code	Status*	Tier**	Common Name	Scientific Name	Confirmed	Database(s)
060017	FESE	I	Spinymussel, James	Pleurobema collina		BOVA
050022	FT		Bat, northern long-eared	Myotis septentrionalis		BOVA
040096	ST	I	Falcon, peregrine	Falco peregrinus		BOVA
040129	ST	I	Sandpiper, upland	Bartramia longicauda		BOVA
040293	ST	I	Shrike, loggerhead	Lanius ludovicianus		BOVA
010127	FSST	II	Madtom, orangefin	Noturus gilberti		BOVA
060173	FSST	II	Pigtoe, Atlantic	Fusconaia masoni		BOVA
040292	ST		Shrike, migrant loggerhead	Lanius ludovicianus migrans		BOVA
100248	FS	I	Fritillary, regal	Speyeria idalia idalia		BOVA
010346	FS	II	Shiner, roughhead	Notropis semperasper		BOVA
020039	FS	II	Salamander, Peaks of Otter	Plethodon hubrichti		BOVA
040093	FS	II	Eagle, bald	Haliaeetus leucocephalus		BOVA
060029	FS	III	Lance, yellow	Elliptio lanceolata		BOVA
100001	FS	IV	fritillary, Diana	Speyeria diana		BOVA
030012	CC	IV	Rattlesnake, timber	Crotalus horridus		BOVA
030040		I	Pinesnake, northern	Pituophis melanoleucus melanoleucus		BOVA
040372		I	Crossbill, red	Loxia curvirostra		BOVA
040225		I	Sapsucker, yellow-bellied	Sphyrapicus varius		BOVA
040319		I	Warbler, black-throated green	Setophaga virens		BOVA
040306		I	Warbler, golden-winged	Vermivora chrysoptera		BOVA
010432		II	Madtom, spotted-	Noturus insignis ssp 1		BOVA

			margin		
040052		II	Duck, American black	Anas rubripes	BOVA
040036		II	Night-heron, yellow-crowned	Nyctanassa violacea violacea	BOVA
040213		II	Owl, northern saw-whet	Aegolius acadicus	BOVA
040320		II	Warbler, cerulean	Setophaga cerulea	BOVA
040266		II	Wren, winter	Troglodytes troglodytes	BOVA

To view **All 488 species** [View 488](#)

* FE=Federal Endangered; FT=Federal Threatened; SE=State Endangered; ST=State Threatened; FC=Federal Candidate; FS=Federal Species of Concern; CC=Collection Concern

** I=VA Wildlife Action Plan - Tier I - Critical Conservation Need;
 II=VA Wildlife Action Plan - Tier II - Very High Conservation Need;
 III=VA Wildlife Action Plan - Tier III - High Conservation Need;
 IV=VA Wildlife Action Plan - Tier IV - Moderate Conservation Need

Bat Colonies or Hibernacula: **Not Known**

Anadromous Fish Use Streams

N/A

Colonial Water Bird Survey

N/A

Threatened and Endangered Waters

N/A

Managed Trout Streams (3 records) (Click on Stream Name to view complete reach history)

[View Map of All Trout Stream Surveys](#)

Reach ID	Stream Name	Class	Brook Trout	Brown Trout	Rainbow Trout	View Map
10MIV-01	Mill Creek	Wild trout		Y		Yes
10MIV-01T	Mill Creek	Wild trout				Yes
10SKG-01T	Sinking Creek	Wild trout				Yes

Bald Eagle Concentration Areas and Roosts

N/A

Bald Eagle Nests

N/A

Habitat Predicted for Aquatic WAP Tier I & II Species

N/A

Habitat Predicted for Terrestrial WAP Tier I & II Species

N/A

Public Holdings:

N/A

Compiled on 3/2/2016, 3:42:15 PM 1712956.0 report=IPA searchType= R dist= 3218 poi= 37,41,41.3 -79,44,46.5
PixelSize=64; Anadromous=0.015899; BECAR=0.013012; Bats=0.012838; Buffer=0.100225; County=0.04708; Impediments=0.01458; Init=0.136644; PublicLands=0.01983; SppObs=0.207877;
TEWaters=0.015221; TierReaches=0.017231; TierTerrestrial=0.034462; Total=0.723358; Tracking_BOVA=0.167723; Trout=0.019196

VaFWIS - Department of Game and Inland Fisheries



37,40,32.6 -79,44,02.9 is the Search Point
Submit Cancel

Map Click **Pan** **Zoom** **Out** Map Scale **Zoom** **Out** Screen Size **Small** **Size** **Big** **Help**

Search Point
 Change to "clicked" map point
 Fixed at 37,40,32.6 -79,44,02.9

Show Position Rings
 Yes No
4 miles and 1 mile at the Search Point

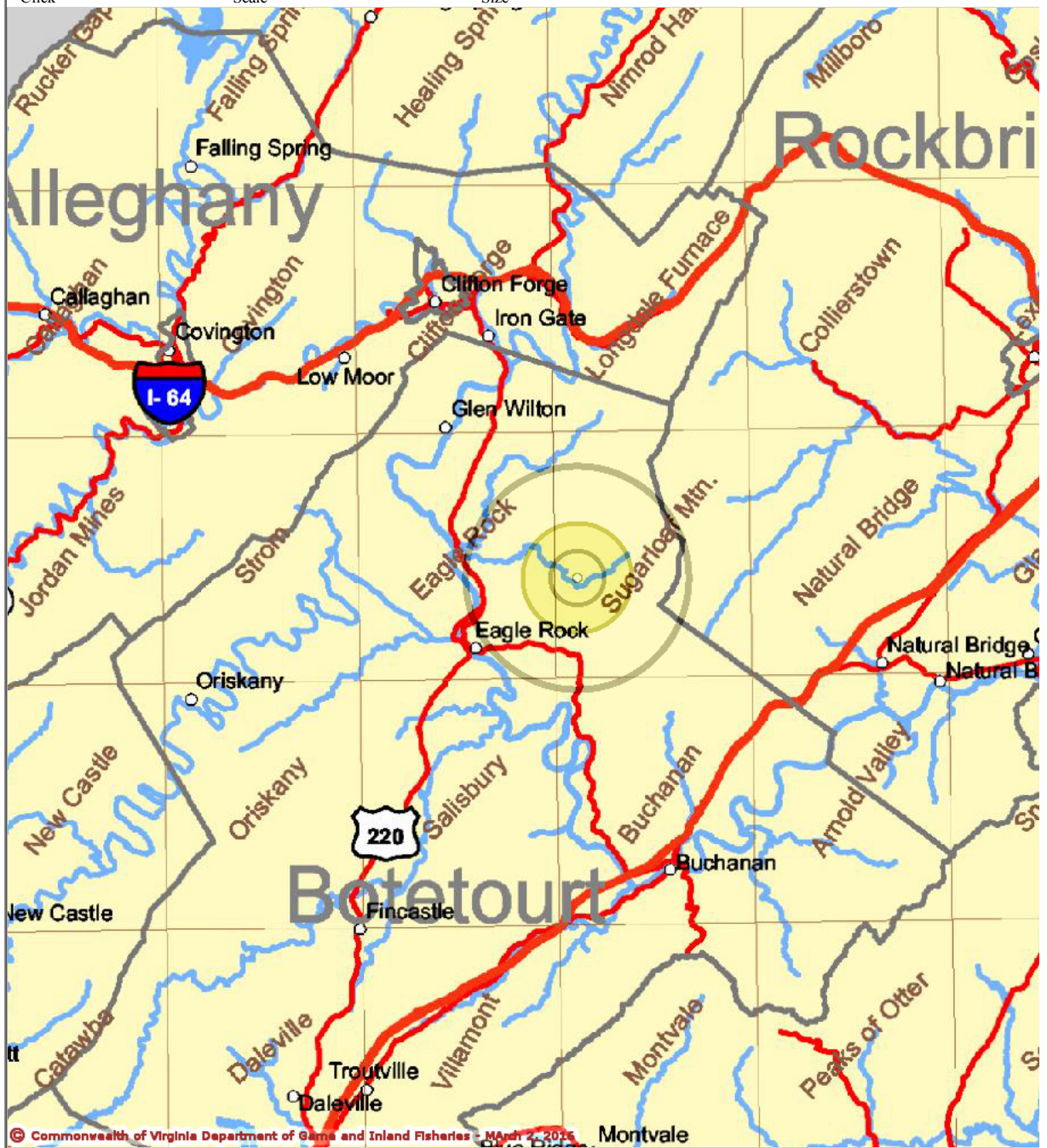
Show Search Area
 Yes No
2 Search distance miles radius

Search Point is at map center

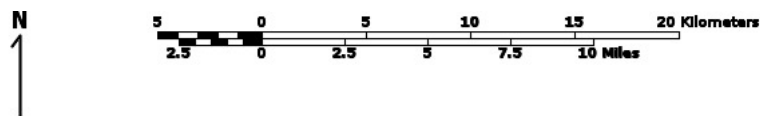
Base Map Choices
County - Quadrangle

Map Overlay Choices
Current List: Position, Search

Map Overlay Legend
 Position Rings 4 miles and 1 mile at the Search Point
 2 mile radius Search Area



© Commonwealth of Virginia Department of Game and Inland Fisheries - March 2, 2016



Point of Search 37,40,32.6 -79,44,02.9
Map Location 37,40,32.6 -79,44,02.9
Select Coordinate System: Degrees, Minutes, Seconds Latitude - Longitude
 Decimal Degrees Latitude - Longitude
 Meters UTM NAD83 East North Zone
 Meters UTM NAD27 East North Zone
Base Map source: 2003 Va. DGIF Virginia Basemap

Map projection is UTM Zone 17 NAD 1983 with left 579628 and top 4202591. Pixel size is 64 meters . Coordinates displayed are Degrees, Minutes, Seconds North and West. Map is currently displayed as 1000 columns by 1000 rows for a total of 1000000 pixels. The map display represents 64000 meters east to west by 64000 meters north to south for a total of 4096.0 square kilometers. The map display represents 210009 feet east to west by 210009 feet north to south for a total of 1582.0 square miles.

Topographic maps and Black and white aerial photography for year 1990+- are from the United States Department of the Interior, United States Geological Survey. Color aerial photography aquired 2002 is from Virginia Base Mapping Program, Virginia Geographic Information Network.

Shaded topographic maps are from TOPO! ©2006 National Geographic
<http://www.national.geographic.com/topo>

All other map products are from the Commonwealth of Virginia Department of Game and Inland Fisheries.

map assembled 2016-03-02 15:35:01 (qa/qc December 5, 2012 8:04 - tn=712953 dist=3218 I)
\$poi=37.7260800 -79.6969900

| [DGIF](#) | [Credits](#) | [Disclaimer](#) | Contact shirl.dressler@dgif.virginia.gov | Please view our [privacy policy](#) |
© 1998-2016 Commonwealth of Virginia Department of Game and Inland Fisheries

VaFWIS Initial Project Assessment Report

Compiled on 3/2/2016, 3:36:31 PM

[Help](#)

Known or likely to occur within a **2 mile radius around point 37,40,32.6 -79,44,02.9**
in **023 Botetourt County, VA**

[View Map of Site Location](#)

488 Known or Likely Species ordered by Status Concern for Conservation
(displaying first 26) (26 species with Status* or Tier I** or Tier II**)

BOVA Code	Status*	Tier**	Common Name	Scientific Name	Confirmed	Database(s)
060017	FESE	I	Spinymussel, James	Pleurobema collina		BOVA
050022	FT		Bat, northern long-eared	Myotis septentrionalis		BOVA
040096	ST	I	Falcon, peregrine	Falco peregrinus		BOVA
040129	ST	I	Sandpiper, upland	Bartramia longicauda		BOVA
040293	ST	I	Shrike, loggerhead	Lanius ludovicianus		BOVA
010127	FSST	II	Madtom, orangefin	Noturus gilberti		BOVA
060173	FSST	II	Pigtoe, Atlantic	Fusconaia masoni		BOVA
040292	ST		Shrike, migrant loggerhead	Lanius ludovicianus migrans		BOVA
100248	FS	I	Fritillary, regal	Speyeria idalia idalia		BOVA
010346	FS	II	Shiner, roughhead	Notropis semperasper		BOVA
020039	FS	II	Salamander, Peaks of Otter	Plethodon hubrichti		BOVA
040093	FS	II	Eagle, bald	Haliaeetus leucocephalus		BOVA
060029	FS	III	Lance, yellow	Elliptio lanceolata		BOVA
100001	FS	IV	fritillary, Diana	Speyeria diana		BOVA
030012	CC	IV	Rattlesnake, timber	Crotalus horridus		BOVA
030040		I	Pinesnake, northern	Pituophis melanoleucus melanoleucus		BOVA
040372		I	Crossbill, red	Loxia curvirostra		BOVA
040225		I	Sapsucker, yellow-bellied	Sphyrapicus varius		BOVA
040319		I	Warbler, black-throated green	Setophaga virens		BOVA
040306		I	Warbler, golden-winged	Vermivora chrysoptera		BOVA
010432		II	Madtom, spotted-	Noturus insignis ssp 1		BOVA

			margin		
040052		II	Duck, American black	Anas rubripes	BOVA
040036		II	Night-heron, yellow-crowned	Nyctanassa violacea violacea	BOVA
040213		II	Owl, northern saw-whet	Aegolius acadicus	BOVA
040320		II	Warbler, cerulean	Setophaga cerulea	BOVA
040266		II	Wren, winter	Troglodytes troglodytes	BOVA

To view **All 488 species** [View 488](#)

* FE=Federal Endangered; FT=Federal Threatened; SE=State Endangered; ST=State Threatened; FC=Federal Candidate; FS=Federal Species of Concern; CC=Collection Concern

** I=VA Wildlife Action Plan - Tier I - Critical Conservation Need;
 II=VA Wildlife Action Plan - Tier II - Very High Conservation Need;
 III=VA Wildlife Action Plan - Tier III - High Conservation Need;
 IV=VA Wildlife Action Plan - Tier IV - Moderate Conservation Need

Bat Colonies or Hibernacula: **Not Known**

Anadromous Fish Use Streams

N/A

Colonial Water Bird Survey

N/A

Threatened and Endangered Waters

N/A

Managed Trout Streams

(3 records) (Click on Stream Name to view complete reach history)

[View Map of All Trout Stream Surveys](#)

Reach ID	Stream Name	Class	Brook Trout	Brown Trout	Rainbow Trout	View Map
10MIV-01	Mill Creek	Wild trout		Y		Yes
10MIV-01T	Mill Creek	Wild trout				Yes
10SMT-01	Smith Branch	Wild trout	Y	Y		Yes

Bald Eagle Concentration Areas and Roosts

N/A

Bald Eagle Nests

N/A

Habitat Predicted for Aquatic WAP Tier I & II Species

N/A

Habitat Predicted for Terrestrial WAP Tier I & II Species

N/A

Public Holdings:

N/A

Compiled on 3/2/2016, 3:36:31 PM 1712953.0 report=IPA searchType= R dist= 3218 poi= 37,40,32.6 -79,44,02.9

PixelSize=64; Anadromous=0.015623; BECAR=0.012814; Bats=0.012699; Buffer=0.100225; County=0.047936; Impediments=0.013614; Init=0.136626; PublicLands=0.019543; SppObs=0.219777; TEWaters=0.015881; TierReaches=0.017806; TierTerrestrial=0.034166; Total=0.735683; Tracking_BOVA=0.16684; Trout=0.020164

VaFWIS - Department of Game and Inland Fisheries

37,41,01.2 -79,45,12.8
is the Search Point

Search Point

- Change to "clicked" map point
- Fixed at 37,41,01.2 -79,45,12.8

Show Position Rings

- Yes No
- 1 mile and 1/4 mile at the Search Point

Show Search Area

- Yes No
- 2 Search distance miles radius

Search Point is at map center

Base Map Choices

Topography

Map Overlay Choices

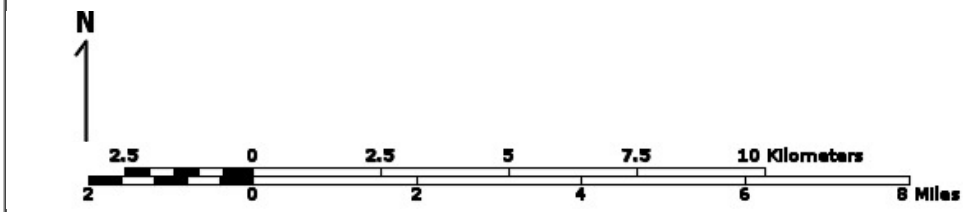
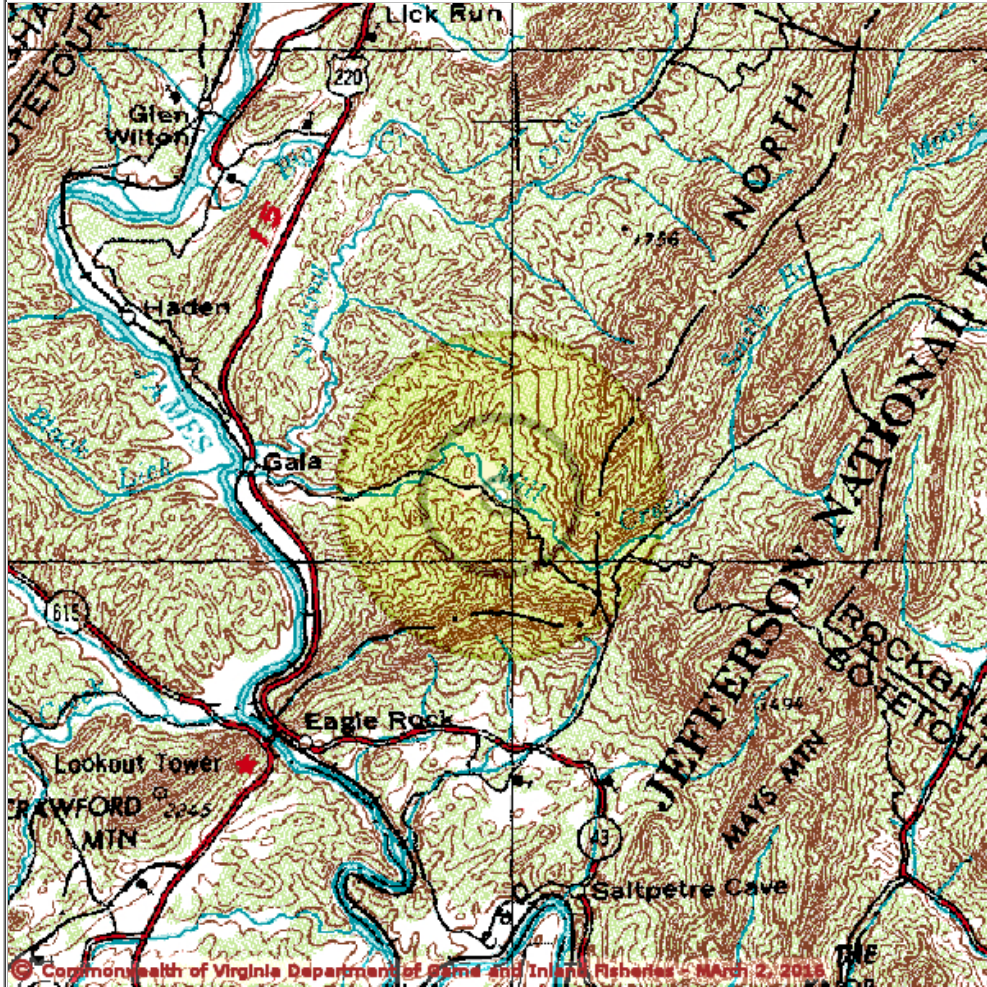
Current List: Position, Search

Map Overlay Legend

-  Position Rings 1 mile and 1/4 mile at the Search Point
-  2 mile radius Search Area

[back](#) 37,43,08.3 -79,42,40.4 [Refresh Browser Page](#)

Map Click Map Scale [Help](#)



Point of Search 37,41,01.2 -79,45,12.8
Map Location 37,41,01.2 -79,45,12.8

- Select **Coordinate System**:
- Degrees,Minutes,Seconds Latitude - Longitude
 - Decimal Degrees Latitude - Longitude
 - Meters UTM NAD83 East North Zone
 - Meters UTM NAD27 East North Zone

Base Map source: USGS 1:250,000 topographic maps (see Microsoft terraserver-usa.com for details)

Map projection is UTM Zone 17 NAD 1983 with left 600304 and top 4181051. Pixel size is 32 meters. Coordinates displayed are Degrees, Minutes, Seconds North and West. Map is currently displayed as 600 columns by 600 rows for a total of 360000 pixels. The map display represents 19200 meters east to west by 19200 meters north to south for a total of 368.6 square kilometers.

The map display represents 63002 feet east to west by 63002 feet north to south for a total of 142.3 square miles.

Topographic maps and Black and white aerial photography for year 1990+ are from the United States Department of the Interior, United States Geological Survey. Color aerial photography aquired 2002 is from Virginia Base Mapping Program, Virginia Geographic Information Network.

Shaded topographic maps are from TOPO! ©2006 National Geographic
<http://www.national.geographic.com/topo>

All other map products are from the Commonwealth of Virginia Department of Game and Inland Fisheries.

map assembled 2016-03-02 15:36:56 (qa/qc December 5, 2012 8:04 - tn=712954 dist=3218 I)
\$poi=37.6756944 -79.7341111

| [DGIF](#) | [Credits](#) | [Disclaimer](#) | Contact shirl.dressler@dgif.virginia.gov | Please view our [privacy policy](#) |
© 1998-2016 Commonwealth of Virginia Department of Game and Inland Fisheries

VaFWIS Initial Project Assessment Report Compiled on[Help](#)

3/2/2016, 3:40:02 PM

Known or likely to occur within a **2 mile radius around point 37,41,01.2 -79,45,12.8**
in **023 Botetourt County, VA**

[View Map of
Site Location](#)

488 Known or Likely Species ordered by Status Concern for Conservation
(displaying first 26) (26 species with Status* or Tier I** or Tier II**)

BOVA Code	Status*	Tier**	Common Name	Scientific Name	Confirmed	Database(s)
060017	FESE	I	Spinymussel, James	Pleurobema collina		BOVA
050022	FT		Bat, northern long-eared	Myotis septentrionalis		BOVA
040096	ST	I	Falcon, peregrine	Falco peregrinus		BOVA
040129	ST	I	Sandpiper, upland	Bartramia longicauda		BOVA
040293	ST	I	Shrike, loggerhead	Lanius ludovicianus		BOVA
010127	FSST	II	Madtom, orangefin	Noturus gilberti		BOVA
060173	FSST	II	Pigtoe, Atlantic	Fusconaia masoni		BOVA
040292	ST		Shrike, migrant loggerhead	Lanius ludovicianus migrans		BOVA
100248	FS	I	Fritillary, regal	Speyeria idalia idalia		BOVA
010346	FS	II	Shiner, roughhead	Notropis semperasper		BOVA
020039	FS	II	Salamander, Peaks of Otter	Plethodon hubrichti		BOVA
040093	FS	II	Eagle, bald	Haliaeetus leucocephalus		BOVA
060029	FS	III	Lance, yellow	Elliptio lanceolata		BOVA
100001	FS	IV	fritillary, Diana	Speyeria diana		BOVA
030012	CC	IV	Rattlesnake, timber	Crotalus horridus		BOVA
030040		I	Pinesnake, northern	Pituophis melanoleucus melanoleucus		BOVA
040372		I	Crossbill, red	Loxia curvirostra		BOVA
040225		I	Sapsucker, yellow-bellied	Sphyrapicus varius		BOVA
040319		I	Warbler, black-throated green	Setophaga virens		BOVA
040306		I	Warbler, golden-winged	Vermivora chrysoptera		BOVA
010432		II	Madtom, spotted-	Noturus insignis ssp 1		BOVA

			margin		
040052		II	Duck, American black	Anas rubripes	BOVA
040036		II	Night-heron, yellow-crowned	Nyctanassa violacea violacea	BOVA
040213		II	Owl, northern saw-whet	Aegolius acadicus	BOVA
040320		II	Warbler, cerulean	Setophaga cerulea	BOVA
040266		II	Wren, winter	Troglodytes troglodytes	BOVA

To view **All 488 species** [View 488](#)

* FE=Federal Endangered; FT=Federal Threatened; SE=State Endangered; ST=State Threatened; FC=Federal Candidate; FS=Federal Species of Concern; CC=Collection Concern

** I=VA Wildlife Action Plan - Tier I - Critical Conservation Need;
 II=VA Wildlife Action Plan - Tier II - Very High Conservation Need;
 III=VA Wildlife Action Plan - Tier III - High Conservation Need;
 IV=VA Wildlife Action Plan - Tier IV - Moderate Conservation Need

Bat Colonies or Hibernacula: **Not Known**

Anadromous Fish Use Streams

N/A

Colonial Water Bird Survey

N/A

Threatened and Endangered Waters

N/A

Managed Trout Streams (2 records) (Click on Stream Name to view complete reach history)

[View Map of All Trout Stream Surveys](#)

Reach ID	Stream Name	Class	Brook Trout	Brown Trout	Rainbow Trout	View Map
10MIV-01	Mill Creek	Wild trout		Y		Yes
10MIV-01T	Mill Creek	Wild trout				Yes

Bald Eagle Concentration Areas and Roosts

N/A

Bald Eagle Nests

N/A

Habitat Predicted for Aquatic WAP Tier I & II Species

N/A

Habitat Predicted for Terrestrial WAP Tier I & II Species

N/A

Public Holdings:

N/A

Compiled on 3/2/2016, 3:40:03 PM 1712954.0 report=IPA searchType= R dist= 3218 poi= 37,41,01.2 -79,45,12.8

PixelSize=64; Anadromous=0.01557; BECAR=0.013909; Bats=0.013548; Buffer=0.099587; County=0.043627; Impediments=0.013506; Init=0.135875; PublicLands=0.016571; SppObs=0.206825; TEWaters=0.015608; TierReaches=0.017526; TierTerrestria=0.033283; Total=0.712887; Tracking_BOVA=0.169092; Trout=0.01592